

Color Bond

Insulation Panel *By*



I.T.C. (1993) CO., LTD.

10, 12 ซอยรามคำแหง 118 แยก 61 แขวงสะพานสูง เขตสะพานสูง กทม. 10240
10, 12 Soi Ramkhamhaeng 118 Yak 61, Saphansong, Saphansong, Bangkok 10240 Thailand.

Tel : +66-2184-0055 Fax : +66-2184-0065

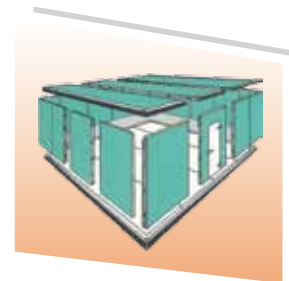
www.itc-group.co.th

info@itc-group.co.th

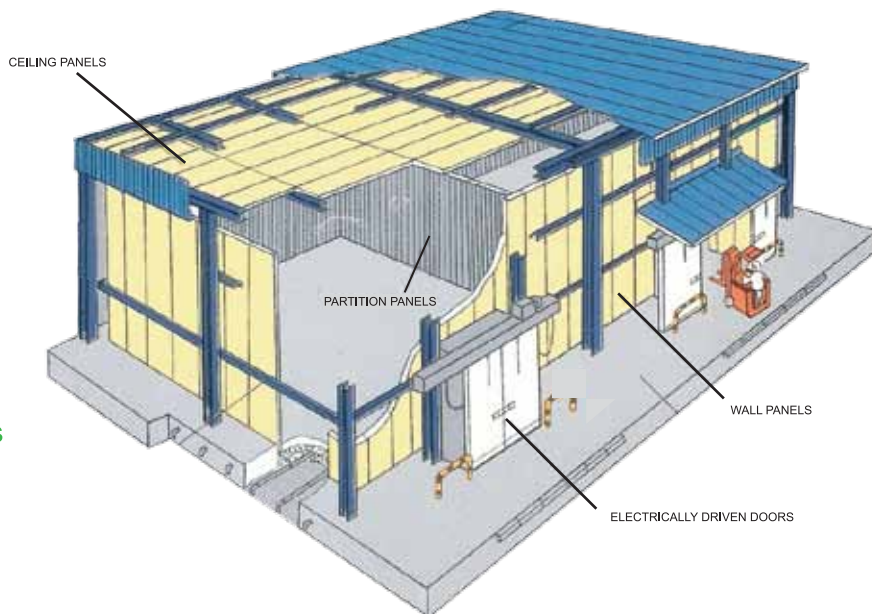


Color Bond

Insulation Panel



Polystyrene Foam



"CLIP-LOCK" Insulation Panels Specifications

DIMENSIONS:

Shell be as indicated on the drawings.

INSULATION THICKNESS:

Insulation thickness for floors, wall and ceilings shall be shown on the drawings.

WALL & CEILING PANELS:

Insulated wall and ceiling panels shall incorporate a built-in locking system to provide a positive panels joining system and even spacing along the panel joints as provided by "clip lock" panels. Facings on each side shall be 0.6 mm, 25% gloss off white Color bond unless otherwise indicated on the drawings bonded under pressure to a core of self-extinguishing grade expanded polystyrene.



DOORS

Door panels are manufactured in the same manner as cold room walls. For a room where the operating temperature is below the freezing point, heater wires are placed behind the metal edge around the door jamb (side, head, and sill) to prevent condensation.

Sliding Doors

are better for traffic areas and loading docks. The moving parts are amenable to maintenance and adjustment. Inclined tracks, adjustable floors, and head-frame wedges provide a superior compression seal with last moment, down-and-in motion.

CHOICE OF DOOR TYPE

Hinged Doors provide a better appearance and easier operation in food service installation. The hardware consists of chrome-plated cam-lift hinges, safety release fasteners, and back door pulls. (The safety release fasteners permit the door to be opened from inside even though pad-locked from the front.)



Bi-Parting Sliding Doors, are also available. The sliding installations can be MANUALLY or POWER operated.

